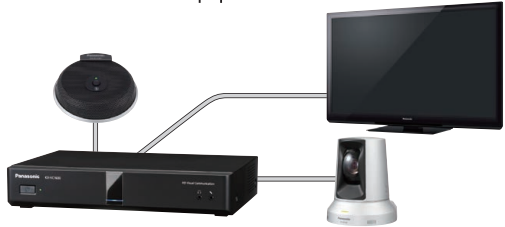


Before Starting a Video Conference

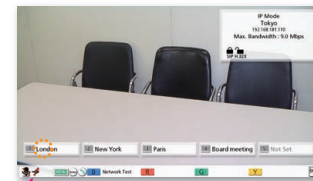
- 1 Confirm that the other equipment (display, video cameras, etc.) is connected to the HD Communication Unit, and the power is turned on for all the equipment.



- 2 Turn on the power to the main unit.



- 3 The Home screen is displayed.



When the connection cannot be established:



Press **[STATUS]**.

Press **[BACK]** to return to the previous screen.

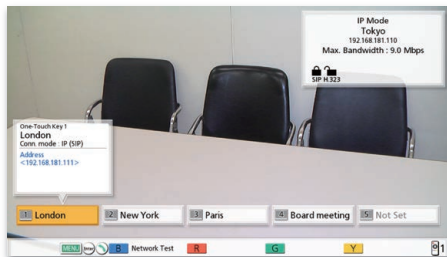


When there is a problem with the connection, or with one of the connected devices, or when there is a device that is not connected, the "—" mark will be displayed. Check that the devices being used are properly connected to the main unit, that the power is turned on for all connected devices, and that no more than 5 boundary microphones (digital interface type) are connected.

Starting a Video Conference

Calling Using One-Touch Connection Number From the Home Screen

- 1 Press **[HOME]**.



- 2 Press a "One-Touch Connection number (1-5)".

- The information registered in the selected One-Touch Connection number is displayed.



The following methods can also be used to make a call.
● Calling from the Call History ● Calling by entering an address directly



Calling from the Contact List

- 1 Press **[MENU]**.



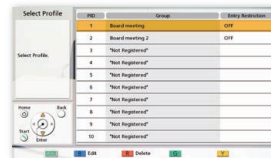
- 2 Select "Contact List" using **[▲][▼]** and press **[ENTER]**. Select the entry you want to call using **[▲][▼][◀][▶]**.



You can also enter a speed dial number, which are displayed in numerical order (1 to 600), to select the party you want to call.

Calling using a Profile

- 1 Press **[MENU]**.



- 2 Select "Profile" using **[▲][▼]** and press **[ENTER]**. Select the profile you want to use to make a call using **[▲][▼]**.

- 3 Press **[START]** to start the call.

Answering a Video Conference Call



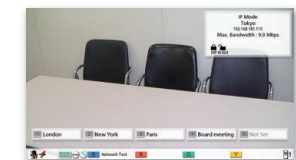
When there is an incoming call ring and a dialogue box is displayed, press **[START]**.

If Automatic Answer is set, when a video conference call is incoming the call will be automatically answered after one ring, and transmission then begins.

Ending a Video Conference Call



Press **[END]**.



The Home screen is displayed.



During multiple-party video conference calls, a dialogue box to select the party whom you want to disconnect is displayed.

Remote Control Operation

Frequently used functions are assigned their own buttons on the remote control for easy operation.



Useful Functions (Audio)

Adjusting the Volume

During a video conference call, the "VOLUME" can be adjusted.

ⓘ When the call ends, the volume will return to the pre-set value.



[+] Increase the volume
[-] Decrease the volume

- The volume can be adjusted during a video conference call.
- The remote control included with the HD Visual Communication Unit can be used to adjust the volume of the unit itself. Likewise, the display's remote control can be used to adjust the volume of the display.

Muting the Microphone

During a video conference call, you can mute the microphone (MIC MUTE) so that your voice cannot be heard by the other party.

Using the remote control:



MIC Mute: Red LED (on)



Useful Functions (Video)

Controlling a Video Camera

- You can control a connected PTZ (Pan/Tilt/Zoom) camera.



[Up] Tilt upwards
[Down] Tilt downwards
[Left] Pan left
[Right] Pan right



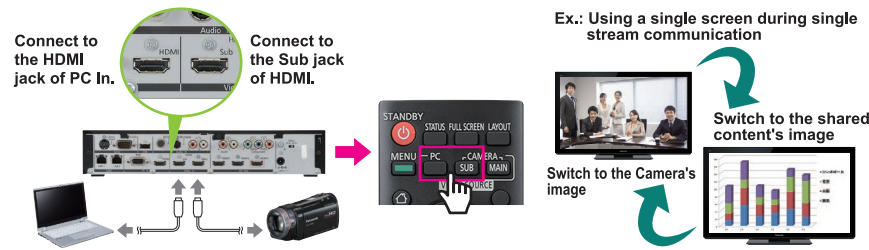
[+] Zoom in
[-] Zoom out



During a video conference call, press [CAM CTRL] to control the other party's video camera.

Displaying a Computer's Screen or the Sub Video Camera's Image

- You can share the contents of a computer's screen or the image of the sub video camera with the other party.
- Supported Resolutions PC: Full-HD, WSXGA+, UXGA, SXGA, WXGA, HD, XGA, SVGA, VGA
Sub Video Camera: Full-HD, HD



To end the sharing of contents, press [CAMERA MAIN].

- The other party's image is displayed again.



Useful Functions (Other)

Changing the Screen Layout

During a video conference call, press [LAYOUT].

- Press the [LAYOUT] button repeatedly to cycle through the difference layout configurations.



Ex.: Sub-site, 1 display, Single stream communication

